



SERVICE BULLETIN

No. 704

Piper Aircraft Corporation

Lock Haven, Pennsylvania, U.S.A.

Modification FAA Approved

June 7, 1982

M

Subject:

Cabin Fan Fuse Installation

Models Affected:

PA-42 Cheyenne III
PA-31 and PA-31-325 Navajo
PA-31-350 Chieftain
PA-31T2 Cheyenne IIXL

Serial Numbers Affected:

42-7800001 through 42-8001069
31-8012001 through 31-8212008
31-8052001 through 31-8252020
31T-8166001 through 31T-8166059,
31T-8166061, and 31T-8166062

Compliance Time: Within the next one hundred (100) operating hours or at the next regularly scheduled maintenance event, whichever occurs first.

Purpose: There have been reports from the field of shorted field windings in the recirculation blower motors, which in some cases may not trip the circuit breaker. This failure may cause varying amounts of smoke and/or fumes in the cabin and cockpit.

This Service Release provides instructions for the addition of individual fuses in the blower motor circuit. These fuses when installed will open the circuit in the event of a malfunctioning motor and prevent wire overheating and smoke.

PART I
(PA-31 / 31-325 / 31-350)

Instructions:

1. Lower overhead switch panel to gain access to the "Recirculation Fans" switch.
2. Locate the back of the "Recirculation Fans" switch and its associated wires per Sketch "A".
3. Cut wires H2C, H2D, H2E and H2F at a convenient distance from the switch, and solder a Piper part number 461 628 (HHJ-A) fuse holder on each of the wires. Reference Sketch "B".
4. Install a Piper part number 461 623 (AGC-5) fuse in the fuse holders for wires H2C and H2E, and a Piper part number 461 632 (AGC-7 1/2) fuse in the fuse holders for wires H2D and H2F.
5. Tie up fuse holders as necessary and reinstall the overhead panel.
6. Log compliance with this Service Release in aircraft logbook.

(over)

ATA: 2120

PART II (PA-42)

Instructions:

1. Remove the lower right electroluminescent panel Piper Part number 71197-04, and remove the cabin fan switch, Piper Part number 588 056 from the instrument panel.
2. Locate the back of the "cabin fan" switch and its associated wires per Sketch "A".
3. Cut wires H1D, H1J, H2N and H2M a convenient distance from the switch and solder a Piper Part Number 461 628 (HHJ-A) fuse holder on each of the wires. Reference Sketch "B".
4. Install a Piper Part number 461 623 (AGC-5) fuse in the fuse holders for wires H2M and H2N, and a Piper Part number 461 632 (AGC-7 1/2) fuse in the fuse holder for wires H1D and H1J.
5. Tie up wires as necessary, and reinstall switch and electroluminescent placard onto instrument panel.
6. Log compliance with this Service Release in aircraft logbook.

PART III (PA-31T2)

Instructions:

1. Remove the lower right electroluminescent panel and remove the cabin fan switch. If the Hartzel Synchrophaser System has been installed, it may also be necessary to drop the computer box just under, and forward of where the switch is installed.
2. Drop the cabin fan switch below the panel and loosen the cables enough to gain access to wires ECS3J, ECS3K, ECS3L and ECS3M.
3. Cut the aforementioned wires a convenient distance from the switch, and solder a fuse holder, Part number 461 628 (HHJ-A), in each of the lines. Refer to Sketch "B".
4. Install a 7.5 amp fuse, Part Number 461 632 (AGC-7 1/2), in each of the lines.
5. Tie up the wires as necessary, and reinstall the switch, electroluminescent panel, and other hardware removed.
6. Log compliance with this service release in the aircraft logbook.

Material Required:

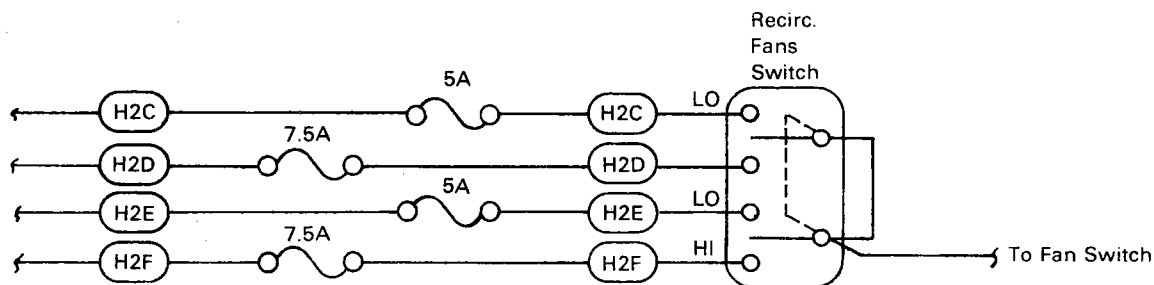
<u>Part Number</u>	<u>Quantity Required Per Aircraft</u>	<u>Nomenclature</u>
461 628 (HHJ-A)	Four (4) each - all aircraft	Fuse Holder
461 623 (AGC-5)	Two (2) each - PA-31/PA-31-325/ PA-31-350/PA-42	Fuse
461 632 (AGC-7 1/2)	Two (2) each - PA-31/PA-31-325/ PA-31-350/PA-42 of Four (4) each - PA-31T2	Fuse

Availability of Parts: Your Piper Field Service Facility or local supplier.

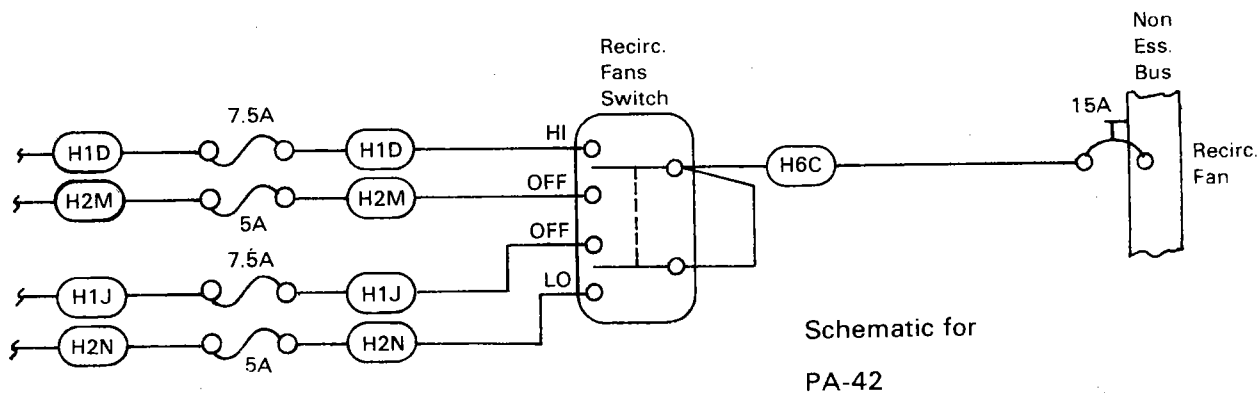
Effectivity Date: This Service Release is effective upon receipt.

Summary: Please contact your Piper Field Service Facility to arrange for compliance with this Service Release in accordance with Compliance Time, above.

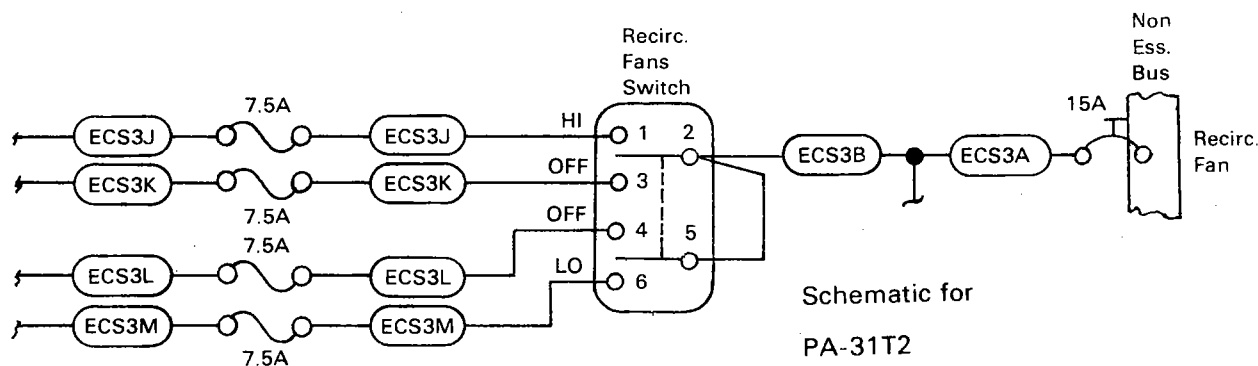
Any applicable factory participation will remain in effect for a period of time not to exceed 180 days from the date of this service release.



Schematic for PA-31, PA-31-325, PA-31-350

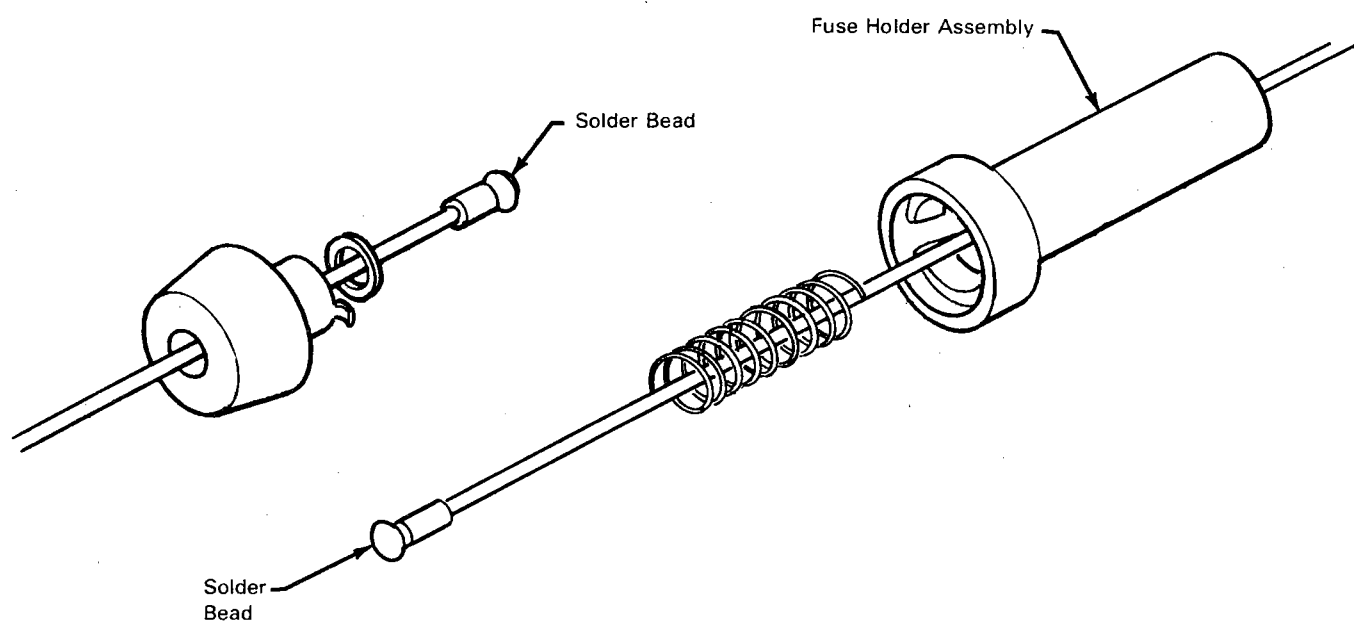


Schematic for
PA-42



Schematic for
PA-31T2

SKETCH "A"



Typical In-Line
Fuse Installation